

# Brief manual for the WMF 1000

## Operation

1x brief	1x espresso
2x brief	2x espresso
1x long	1x ristretto



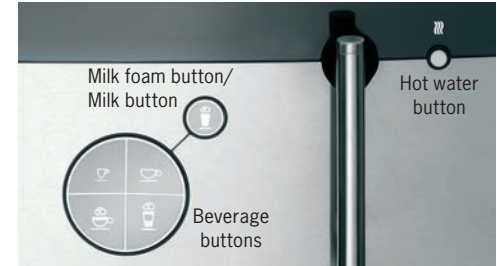
1x café crème
2x café crème
1x mug café crème

1x brief
2x brief
1x long

1x brief	1x cappuccino
2x brief	1x mug cappuccino
1x long	1x café latte

1x latte macchiato
Not assigned
1x espresso macchiato

1x brief
1x long



**Press 1x briefly**



1 mug milk

**press and hold**

Milk foam on request

**Press 1x briefly**



1 glass hot water

**press and hold**

Hot water on request

### Readiness state display

your selection pls  
24.10.2006 08:15

### Coffee strength for the next beverage

- **Normal** - standard setting
- **Mild** - about 15 % weaker → 2x minus button
- **Strong** - about 15 % stronger → 2x plus button

### Other types of coffee using the manual insert:

- > Pour the ground coffee into the manual insert (not more than 15 g for a maximum of one cup)
- > Close the cover
- > Select the beverage with the beverage buttons

*This procedure can be cancelled with the Off/C button. Any ground coffee previously inserted is removed via the coffee grounds container.*



This manual does not replace the user manual. Always heed the safety instructions in the user manual, for your safety and for care of your WMF 1000.



Storage of this brief manual



# Customer care

## Care programs

- Warm-up rinse/Coffee system rinse
- Milk system rinse
- Coffee machine cleaning

*For filter change and descaling see user manual.*

## Manual cleaning:

- Milk system cleaning

*See user manual for brewing unit cleaning and general cleaning.*

## Milk system rinse

- > Push the all-in-one spout to the uppermost position (clicks home)
- > Place a container under the all-in-one spout
- > Wipe off the outside of the milk hose with a clean, damp cloth
- > Place the milk hose with the milk nozzle attached on to the hot water spout and turn it clockwise to the stop
- > Start the rinse with the care button

*After rinsing (duration about 30 seconds):*

- > Turn the milk hose anticlockwise, thus disconnecting it from the hot water spout
- > Move the all-in-one spout downwards

## Calling up the care programs

To select the care programs without a previous request on the display:

- > Press the **^P** button

select care program  
browse: care button

- > Use the care button to browse to the desired program
- > Select the desired program by pressing the **^P** button

## Cleaning program

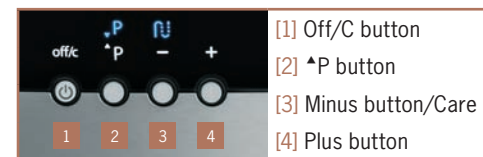
- > Confirm machine cleaning with the **^P** button
- > The individual steps appear on the display on request
- > Place an appropriate container (min. 3 litres) under the all-in-one spout
- > Add a cleaning tablet together with the yellow sponge and close the cover
- > Press the care button

*The cleaning program starts.*

*Duration machine cleaning about 5 minutes. The display calls for a manual milk system cleaning.*

## Warm-up rinse/Coffee system rinse

- > Place a container under the all-in-one spout
- > Confirm the request with the **^P** button
- > Start the rinse with the care button



## Milk system cleaning

- > Remove the all-in-one spout and the milk hose
- > Disassemble all parts
- > Leave them in the cleaning solution (1 measuring cap WMF milk system cleaner and 200 ml water) for 5 hours or overnight.
- > Then rinse all parts thoroughly with running warm water
- > Reassemble the all-in-one spout and the milk hose, and refit them